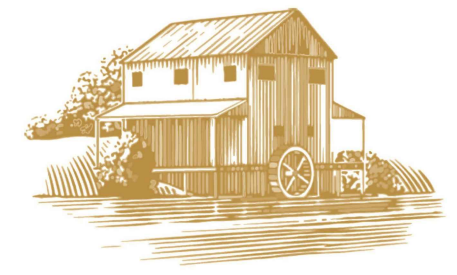


EXHIBIT B



COLOMA RIVER CAPITAL

Owner:
Coloma River Capital
Address:
1140 3rd Street NW,
Suite 2151,
Washington, DC 20002
Charles Paret
202-838-6941

71 KENNEDY STR. NW
5505 1st St. NW / 67-71 Kennedy St. NW
Washington, DC 20011
PROJECT MANAGER: PENG WANG

SCALE: 1/8"=1'-0"

DATE:

PROJECT NUMBER:

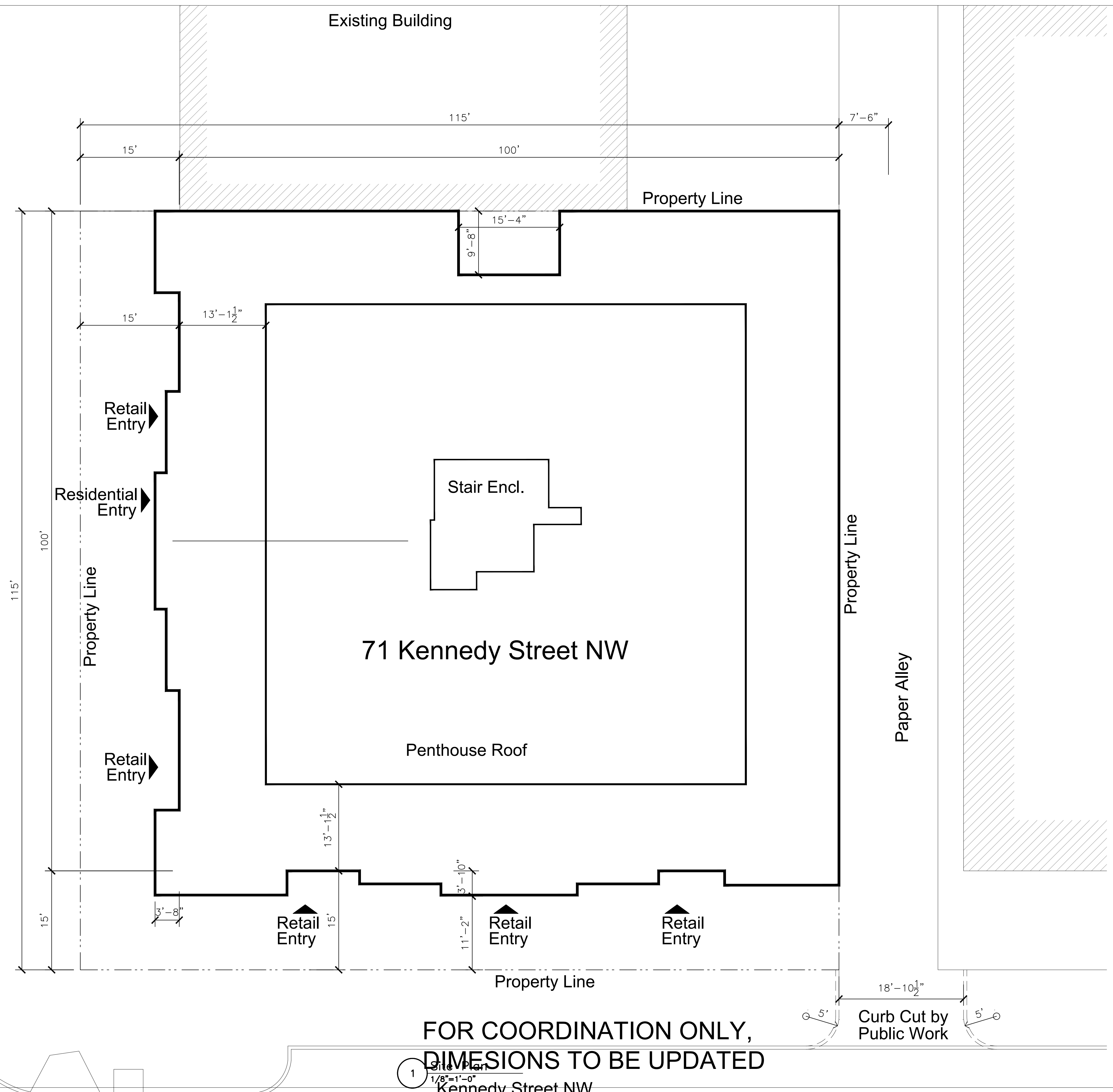
SHEET TITLE

Site Plan

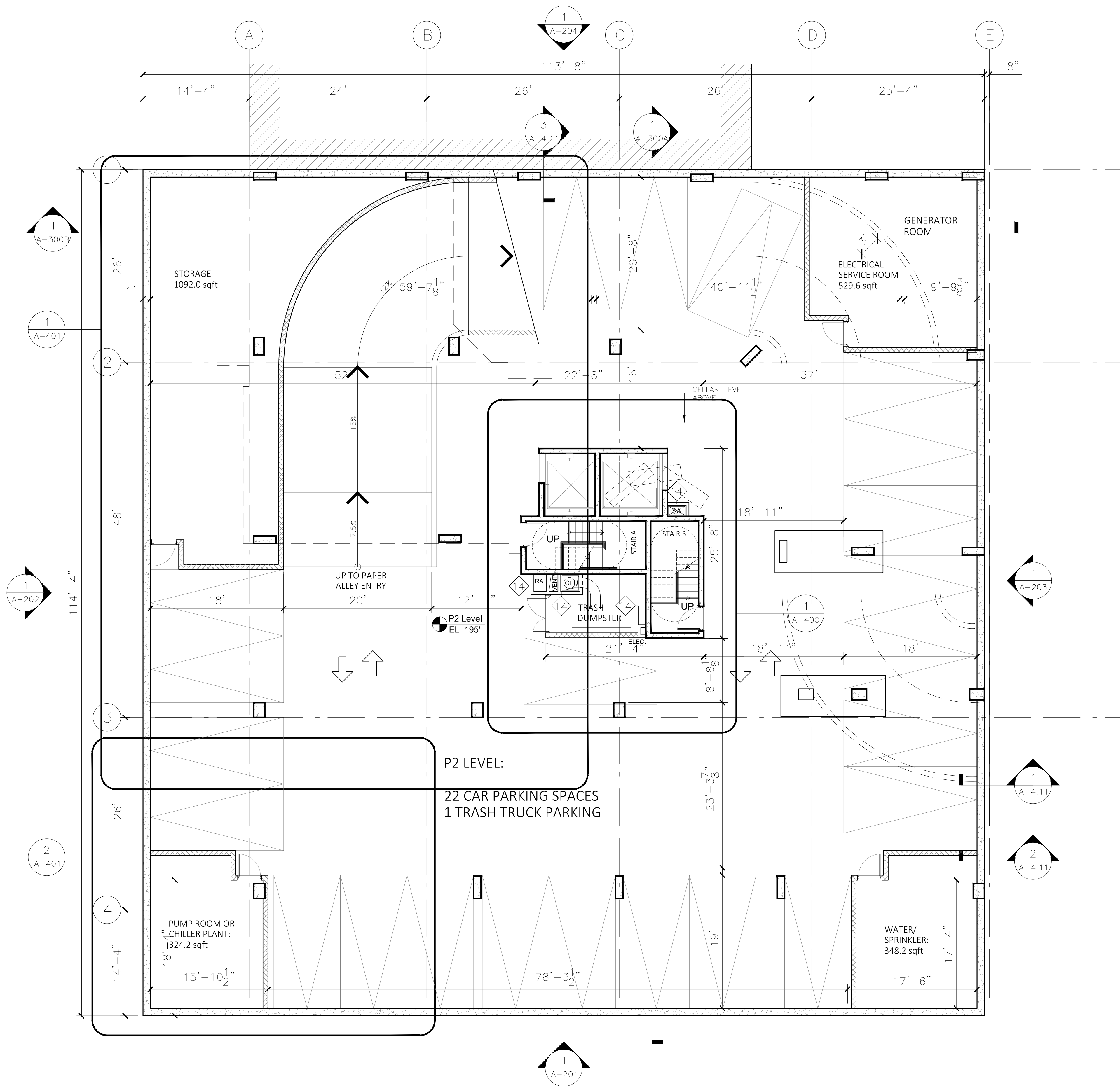
SHEET NUMBER

A-100





1st Street NW



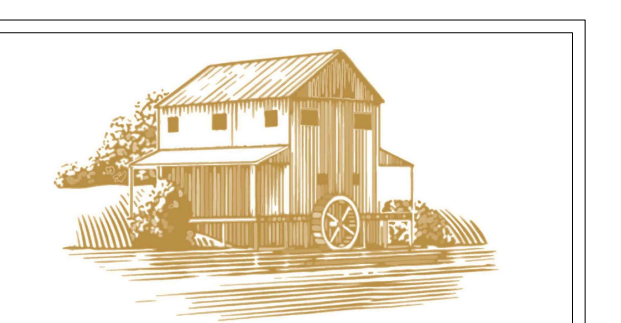
FOR COORDINATION ONLY,
DIMENSIONS TO BE UPDATED
Site Plan
1/8"=1'-0"
Kennedy Street NW



1 P2 LEVEL PARKING PLAN - 23 PARKING SPACES
1/8"=1'-0"

-  CONCRETE WALL
-  CMU WALL
-  PARTITION TAG
-  WINDOW TAG

2 SHEET NOTES/LEGEND



COLOMA RIVER CAPITAL

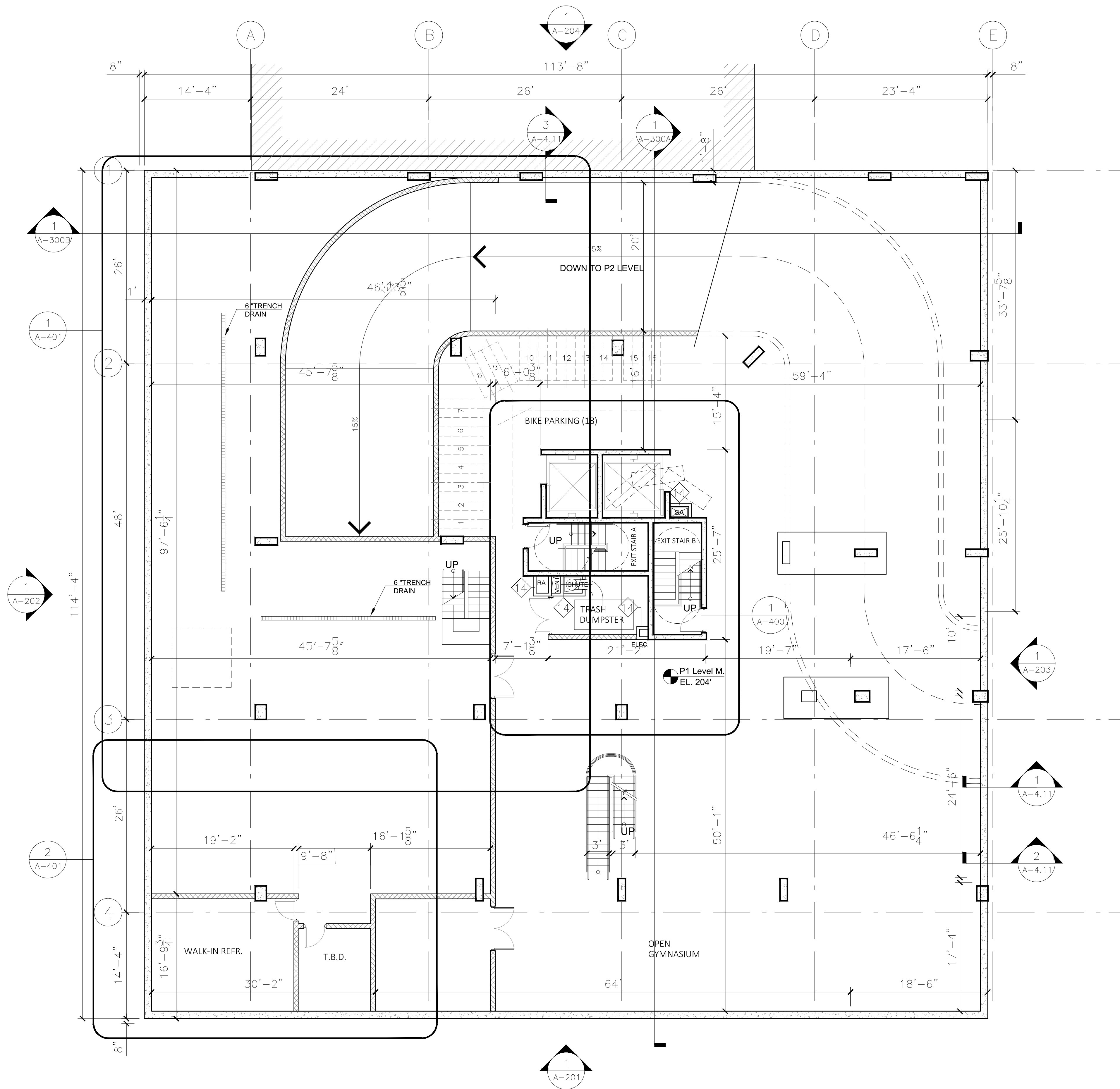
Owner:
Coloma River Capital
Address:
1140 3rd Street NW,
Suite 2151,
Washington, DC 20002
Charles Paret
202-838-6941

71 KENNEDY STR. NW
5505 1st St. NW / 67-71 Kennedy St. NW
Washington, DC 20011
PROJECT MANAGER: PENG WANG

SCALE: 1/8"=1'-0"
DATE:
PROJECT NUMBER:

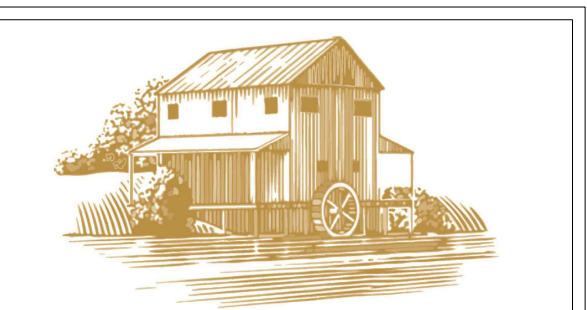
SHEET TITLE
P2 Level
Parking Plan

SHEET NUMBER
A-101A



1 P1 LEVEL PLAN
1/8"=1'-0"

2 SHEET NOTES/LEGEND



COLOMA RIVER CAPITAL

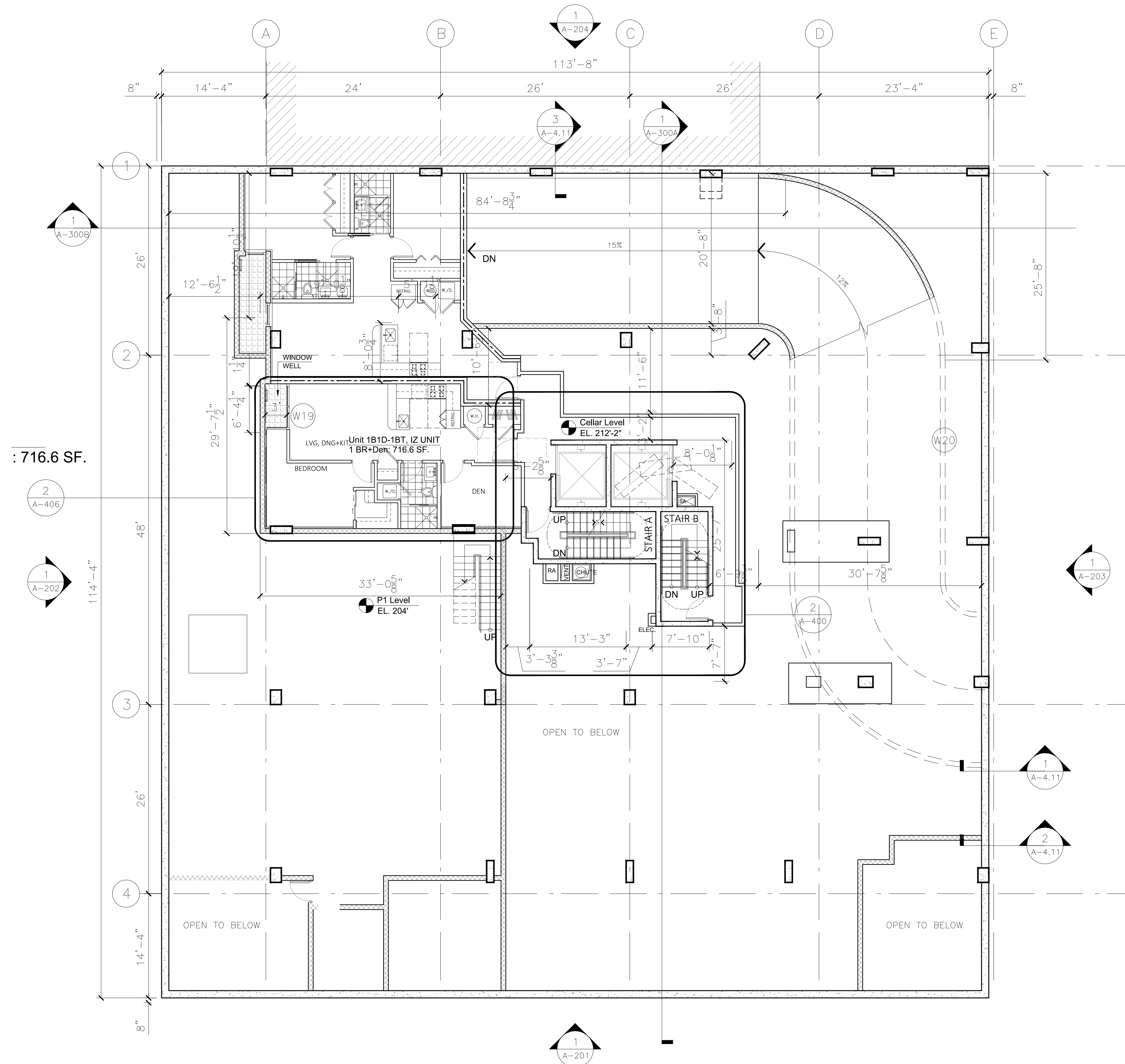
Owner:
Coloma River Capital
Address:
1140 3rd Street NW,
Suite 2151,
Washington, DC 20002
Charles Paret
202-838-6941

71 KENNEDY STR. NW
5505 1st St. NW / 67-71 Kennedy St. NW
Washington, DC 20011
PROJECT MANAGER: PENG WANG

SCALE: 1/8"=1'-0"
DATE:
PROJECT NUMBER:

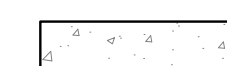
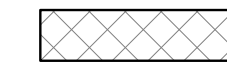


SHEET TITLE
P1 Level
Plan

SHEET NUMBER
A-101B

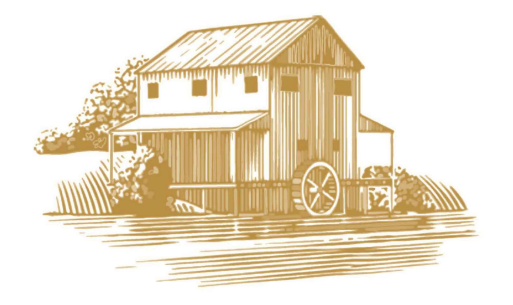


: 716.6 SF.

1 CELLAR LEVEL PLAN
1/8"=1'-0"

-  CONCRETE WALL
-  CMU WALL
-  PARTITION TAG
-  WINDOW TAG

2 SHEET NOTES/LEGEND



COLOMA RIVER CAPITAL

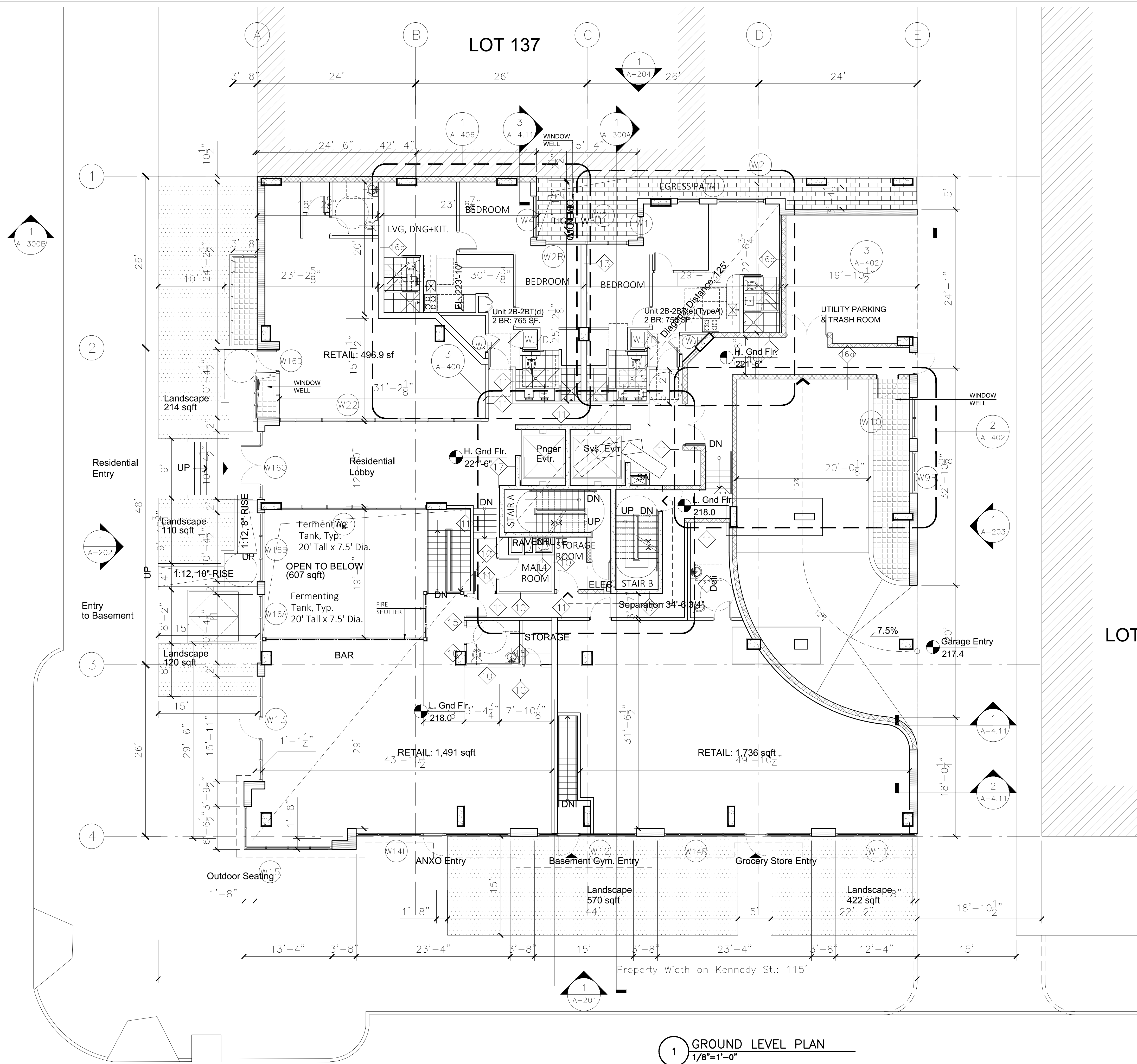
Owner:
Coloma River Capital
Address:
1140 3rd Street NW,
Suite 2151,
Washington, DC 20002
Charles Paret
202-838-6941

71 KENNEDY STR. NW
5505 1st St. NW / 67-71 Kennedy St. NW
Washington, DC 20011
PROJECT MANAGER: PENG WANG

SCALE: 1/8"=1'-0"
DATE:
PROJECT NUMBER:

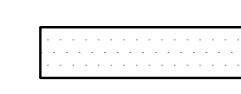


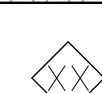

SHEET TITLE
Cellar
Level Plan

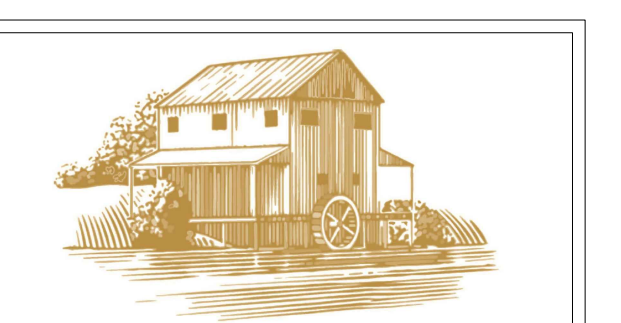
SHEET NUMBER
A-102



1 GROUND LEVEL PLAN
1/8"=1'-0"

2 SHEET NOTES/LEGEND

-  BRICK VENEER EXTERIOR WALL
-  CONCRETE WALL
-  CMU WALL
-  PARTITION TAG
-  WINDOW TAG



COLOMA RIVER CAPITAL

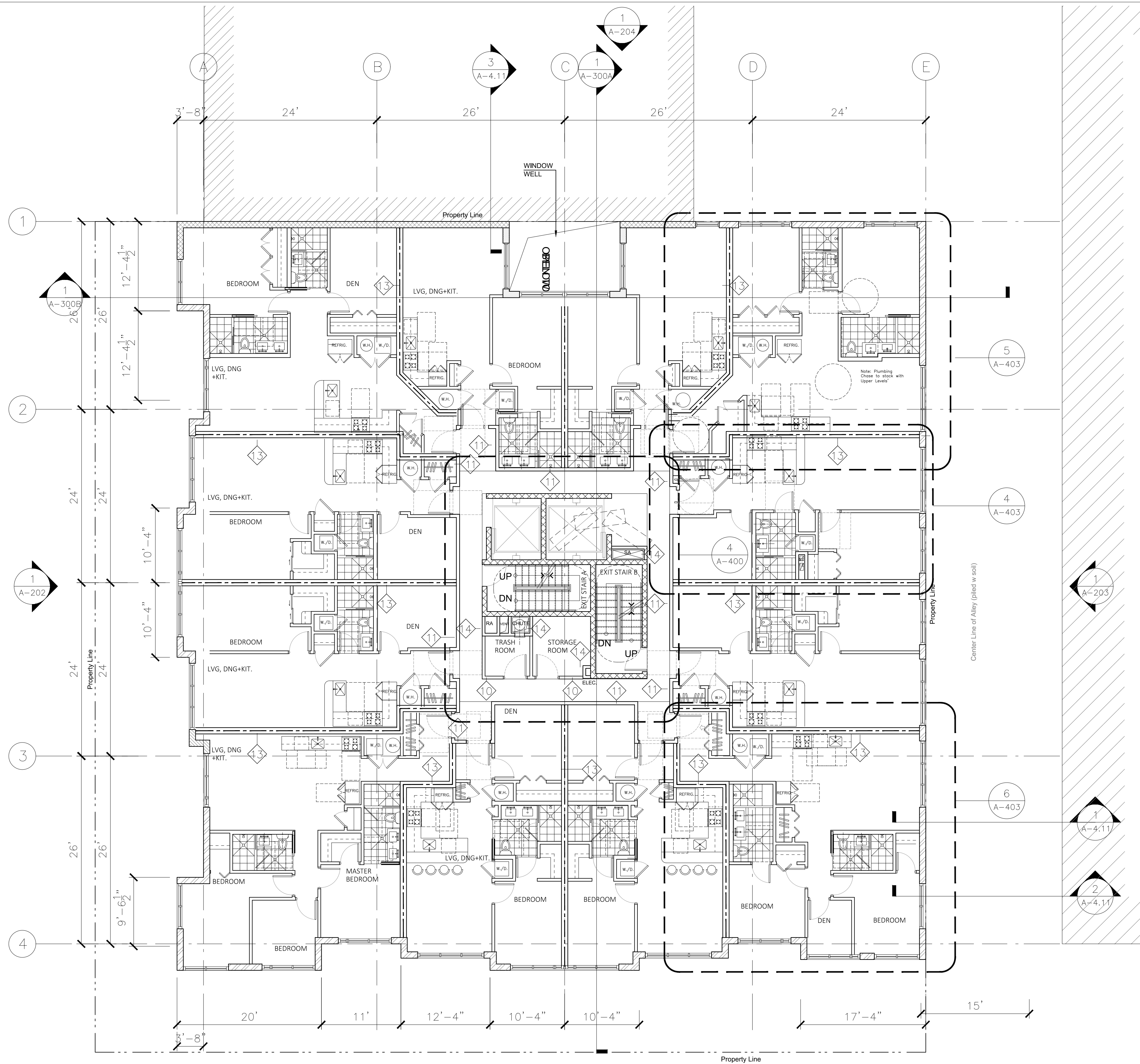
Owner:
Coloma River Capital
Address:
1140 3rd Street NW,
Suite 2151,
Washington, DC 20002
Charles Paret
202-838-6941

71 KENNEDY STR. NW
5505 1st St. NW / 67-71 Kennedy St. NW
Washington, DC 20011
PROJECT MANAGER: PENG WANG

SCALE: 1/8"=1'-0"
DATE:
PROJECT NUMBER:

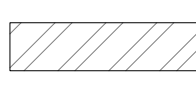
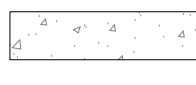



SHEET TITLE
Ground Floor Plan

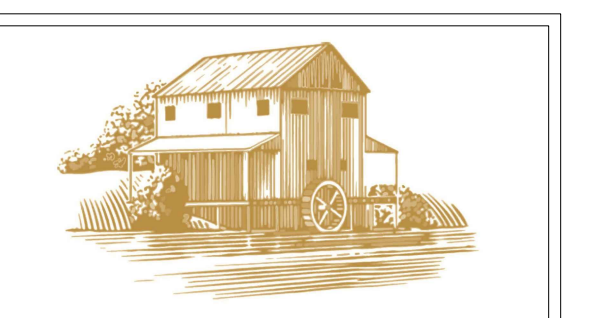
SHEET NUMBER
A-103



1 2ND FLOOR PLAN
1/8"=1'-0"

2 SHEET NOTES/LEGEND

-  EXTERIOR WALL - METAL PANELS
-  CONCRETE WALL
-  CMU WALL
-  PARTITION TAG
-  WINDOW TAG



COLOMA RIVER CAPITAL

Owner:
Coloma River Capital
 Address:
 1140 3rd Street NW,
 Suite 2151,
 Washington, DC 20002
 Charles Paret
 202-838-6941

71 KENNEDY STR. NW
 5505 1st St. NW / 67-71 Kennedy St. NW
 Washington, DC 20011
 PROJECT MANAGER: PENG WANG

SCALE: 1/8"=1'-0"
 DATE:
 PROJECT NUMBER:

SHEET TITLE
2nd Floor Plan

SHEET NUMBER
A-104